



The City of

Reading

Fire Department

2010 Annual Operations Report



Prepared by Paul M. Gallo
Lieutenant

Source: Firehouse Software RMS



Each year the Reading Fire Department prepares an annual report that reflects the department's activities and accomplishments for the previous year. This document provides summary information about the work our members perform as they labor to protect the people who live, work, and recreate within the City of Reading and the Village of Arlington Heights.

We are committed to provide the best possible proactive approach to fire safety, prevention and education. We will pursue excellence while remaining efficient and cost effective. I am confident that a review of this report will confirm our dedication to this goal. May we continue to work together to make our communities a safe and productive environment for all concerned. We assure every citizen that our mission will be accomplished in a fashion which reflects this Department's dedication to outstanding customer and community service.

I wish to express my appreciation and thanks to each and every member of the department for the splendid dedication and performance of their duties. A special thanks to Lieutenant Paul Gallo who prepared this summary of the department's activities for 2010.

My sincere gratitude to Mayor Bemmes, the administrative staff, and the members of City Council for their continued cooperation and help. I also wish to express my appreciation to Mayor Surber and the entire Village of Arlington Heights, as we approach the third year of contracting our services to their community.

Sincerely,

Kevin D. Kaiser

Fire Chief

Contents

Vision, Mission, and Values.....	4
Budget.....	5
Incidents by Year.....	7
Incident Trend.....	7
Incident Summary by Major Category Type.....	8
Incident Response Zone.....	9
Fires and Fire Losses by Major Property Use.....	10
Large Loss Fires.....	10
Area of Origin and Cause of Ignition.....	11
Civilian and Firefighter Injuries.....	11
Provider Impression.....	12
Transport Destination.....	12
Calls by Month.....	13
Response Times.....	14
Overlapping Incidents.....	14
Incidents by Day of Week and by Time.....	15
Training.....	16
Fire Prevention and Public Education.....	17
Accomplishments.....	18
Awards and Honors.....	18
Staff.....	19

Vision

To reduce death, injury, and property loss from fire and to reduce morbidity and mortality from sudden illness or injury.

Mission

The mission of the Reading Fire Department is to protect life, property, and the environment.

We will accomplish this with professional, knowledgeable, and dedicated personnel, using the allocated resources efficiently.

We pledge to deliver the highest quality of emergency medical services, fire suppression, public education, and fire prevention to meet the needs of our community.

Values

Honor

Pride

Teamwork

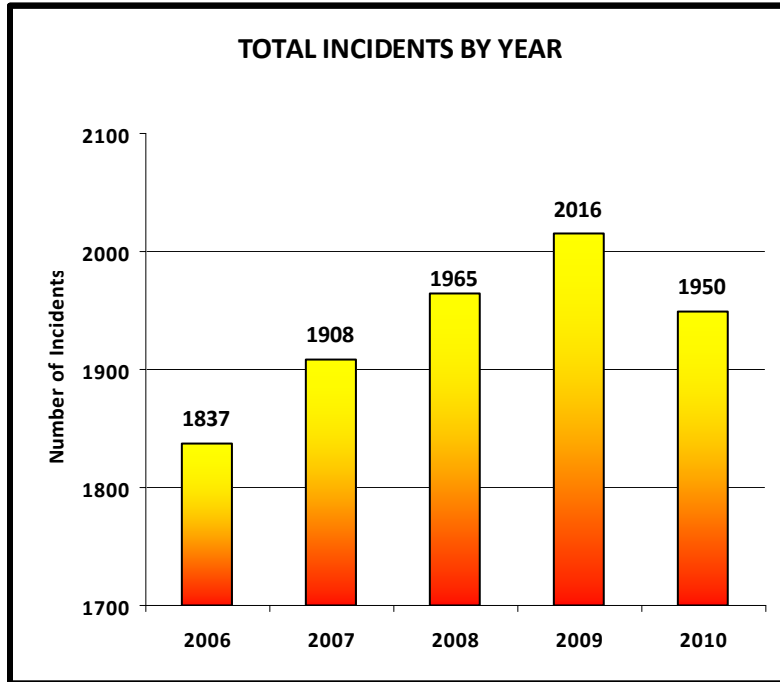
READING FIRE DEPARTMENT

BUDGET COMPARABLES - ANNUAL EXPENSES

<u>ACCOUNT</u>	<u>2004</u>	<u>2005</u>	<u>2006</u>	<u>2007</u>	<u>2008</u>	<u>2009</u>	<u>2010</u>
	<u>EXPENSES</u>	<u>EXPENSES</u>	<u>EXPENSES</u>	<u>EXPENSES</u>	<u>EXPENSES</u>	<u>EXPENSES</u>	<u>EXPENSES</u>
101.100.5624.00 FF Salaries (FT)	\$ 980,943.37	\$ 1,002,767.61	\$ 1,055,188.20	\$ 1,095,066.72	\$ 1,170,256.50	\$ 1,197,573.78	\$ 1,163,722.34
101.100.5680.00 Sick and Vacation	\$ 8,000.00	\$ 8,300.00	\$ -	\$ -	\$ -	\$ -	\$ -
FIRE SALARIES (FT)	\$ 988,943.37	\$ 1,011,067.61	\$ 1,055,188.20	\$ 1,095,066.72	\$ 1,170,256.50	\$ 1,197,573.78	\$ 1,163,722.34
FRINGES	\$ 344,813.28	\$ 485,034.62	\$ 468,706.56	\$ 485,415.05	\$ 555,950.48	\$ 572,587.88	\$ 495,803.03
101.100.5700.00							
101.100.5805.04 Computer	\$ 3,364.39	\$ 3,650.37	\$ 6,211.02	\$ 4,696.77	\$ 2,281.75	\$ 4,181.31	\$ 4,820.53
101.100.5805.06 Vehicle Maintenance	\$ 5,177.70	\$ 9,517.27	\$ 8,583.43	\$ 11,874.12	\$ 12,355.72	\$ 8,432.01	\$ 11,864.00
101.100.5805.09 Equipment/Tools	\$ 10,230.82	\$ 11,675.00	\$ 8,039.08	\$ 10,487.83	\$ 6,722.22	\$ 6,907.60	\$ 13,171.75
101.100.5805.10 Safety Equipment	\$ -	\$ -	\$ -	\$ -	\$ -	\$ -	\$ -
101.100.5805.12 Medical	\$ -	\$ -	\$ -	\$ 29.98	\$ -	\$ -	\$ -
101.100.5805.13 Other Supplies	\$ 3,675.00	\$ 3,677.10	\$ 3,431.51	\$ 4,822.12	\$ 5,162.98	\$ 3,487.78	\$ 3,707.36
101.100.5805.62 Gasoline	\$ 2,574.53	\$ 2,954.67	\$ 2,758.94	\$ 2,965.11	\$ 4,178.62	\$ 2,536.87	\$ 2,719.74
101.100.5805.66 Diesel Fuel	\$ 3,137.40	\$ 4,540.34	\$ 6,716.97	\$ 6,619.91	\$ 10,668.10	\$ 7,386.12	\$ 5,496.49
101.100.5810.08 Maintenance Contracts	\$ 2,200.00	\$ 3,325.50	\$ 3,199.75	\$ -	\$ -	\$ -	\$ -
101.100.5810.12 Consultants	\$ 9,295.46	\$ 5,128.50	\$ -	\$ -	\$ -	\$ -	\$ -
101.100.5810.13 Purchases/Services Other	\$ 3,265.00	\$ 3,119.79	\$ 8,119.81	\$ 6,062.77	\$ 10,625.46	\$ 7,718.13	\$ 14,307.41
101.100.5810.15 Physicals	\$ 1,478.00	\$ 1,300.00	\$ 3,333.00	\$ 4,351.00	\$ 1,288.60	\$ 2,250.00	\$ 8,082.00
101.100.5810.16 Lease	\$ -	\$ -	\$ -	\$ -	\$ -	\$ -	\$ -
101.100.5820.00 Training/Education	\$ 3,838.26	\$ 4,564.53	\$ 5,845.97	\$ 7,018.65	\$ 5,396.85	\$ 6,064.75	\$ 5,140.73
Fire Prevention	\$ -	\$ -	\$ -	\$ -	\$ -	\$ -	\$ -
101.100.5825.00 Milage/Travel	\$ -	\$ -	\$ -	\$ -	\$ -	\$ -	\$ -
101.100.5830.00 Dues/Subscriptions	\$ 1,300.45	\$ 1,203.95	\$ 1,789.95	\$ 1,251.45	\$ 1,586.45	\$ 1,282.45	\$ 1,351.50
101.100.5835.00 Postage	\$ 645.53	\$ 888.84	\$ 925.65	\$ 526.26	\$ 485.80	\$ 663.90	\$ 365.82
101.100.5840.00 Printing	\$ 1,418.50	\$ 468.30	\$ 562.46	\$ 526.26	\$ 660.98	\$ 1,165.71	\$ 102.59
101.100.5845.00 Communication	\$ 2,767.00	\$ 3,240.14	\$ 6,025.13	\$ 6,693.76	\$ 6,451.45	\$ 3,246.83	\$ 3,672.45
101.100.5870.00 Insurance/Taxes	\$ 11,974.00	\$ 11,600.00	\$ 10,688.00	\$ 5,025.00	\$ 4,014.00	\$ 4,950.50	\$ 4,021.15
101.100.5885.00 Telephone	\$ 4,364.57	\$ 4,837.92	\$ 4,807.77	\$ 4,670.47	\$ 3,698.95	\$ 3,429.81	\$ 2,291.52
FIRE OPERATIONS	\$ 70,706.61	\$ 75,692.22	\$ 81,038.44	\$ 77,621.46	\$ 75,577.93	\$ 63,703.77	\$ 81,115.04
101.100.5906.00 HILLTOP STATION	\$ 7,125.00	\$ 7,583.58	\$ 6,625.79	\$ 6,982.35	\$ 7,061.98	\$ 7,703.87	\$ 7,462.77

<u>ACCOUNT</u>	<u>2004</u> <u>EXPENSES</u>	<u>2005</u> <u>EXPENSES</u>	<u>2006</u> <u>EXPENSES</u>	<u>2007</u> <u>EXPENSES</u>	<u>2008</u> <u>EXPENSES</u>	<u>2009</u> <u>EXPENSES</u>	<u>2010</u> <u>EXPENSES</u>
101.103.5626.00 POC Salaries (FIRE)	\$ 56,080.50	\$ 42,192.97	\$ 37,650.61	\$ 105,619.25	\$ 216,753.89	\$ 243,701.19	\$ 218,105.25
101.103.5800.00 POC Fringes	\$ 6,221.58	\$ 6,331.67	\$ 15,355.03	\$ 23,285.09	\$ 68,796.24	\$ 86,300.37	\$ 120,450.83
POC (FIRE)	\$ 62,302.08	\$ 48,524.64	\$ 53,005.64	\$ 128,904.34	\$ 285,550.13	\$ 330,001.56	\$ 338,556.08
101.103.5800.00 POC (FIRE) OPERATIONS	\$ 3,411.22	\$ 4,801.15	\$ 4,617.27	\$ 6,112.08	\$ 5,716.64	\$ 5,758.68	\$ 7,870.33
101.105.5628.00 EMS Salaries (POC)	\$ 55,254.25	\$ 40,614.43	\$ 54,020.28	\$ 29,070.11	\$ -	\$ -	\$ -
101.105.5700.00 EMS Benefits (POC)	\$ 3,925.13	\$ 3,497.41	\$ 11,033.50	\$ 4,635.38	\$ -	\$ -	\$ -
POC EMS	\$ 59,179.38	\$ 44,111.84	\$ 65,053.78	\$ 33,705.49	\$ -	\$ -	\$ -
101.105.5805.06 EMS Vehicle Maintenance	\$ 2,749.00	\$ 1,493.89	\$ 1,579.14	\$ 1,904.18	\$ 3,439.68	\$ 4,793.93	\$ 2,972.85
101.105.5805.09 Equipment/Tools	\$ 219.04	\$ 2,709.98	\$ 666.80	\$ 5,593.13	\$ 2,110.47	\$ 1,227.41	\$ 182.70
101.105.5805.10 Safety Equipment	\$ -	\$ -	\$ -	\$ -	\$ -	\$ -	\$ -
101.105.5805.12 Medical Supplies	\$ 6,688.00	\$ 8,905.55	\$ 8,050.24	\$ 9,383.15	\$ 7,216.73	\$ 7,753.87	\$ 8,655.14
101.105.5805.13 Other Supplies	\$ 5.99	\$ 51.37	\$ 46.31	\$ 31.92	\$ 412.67	\$ 15.60	\$ 113.19
101.105.5805.66 Diesel Fuel	\$ 2,318.93	\$ 2,728.45	\$ 4,964.68	\$ 5,012.75	\$ 7,845.95	\$ 5,459.30	\$ 4,062.64
101.105.5810.08 Maintenance Contracts	\$ 3,934.80	\$ 3,934.80	\$ 4,342.00	\$ 4,350.50	\$ 4,859.00	\$ 4,859.00	\$ 3,257.00
101.105.5810.13 Purchases/Service Other	\$ 4,475.00	\$ 4,380.00	\$ 5,612.00	\$ 4,330.00	\$ 4,470.00	\$ 4,332.60	\$ 4,620.00
101.105.5820.00 Training/Education	\$ 387.14	\$ 1,045.00	\$ 1,155.00	\$ 4,800.00	\$ 1,281.90	\$ 2,506.94	\$ 861.31
Public Education	\$ -	\$ -	\$ -	\$ -	\$ -	\$ -	\$ -
101.105.5830.00 Dues/Subscriptions	\$ -	\$ -	\$ -	\$ -	\$ -	\$ -	\$ -
101.105.5835.00 Postage	\$ -	\$ -	\$ -	\$ 37.22	\$ -	\$ -	\$ -
101.105.5840.00 Printing	\$ 905.97	\$ 500.00	\$ 1,399.12	\$ 1,048.21	\$ 1,540.66	\$ 226.55	\$ 952.80
101.105.5845.00 Communication	\$ 612.72	\$ 799.39	\$ 293.38	\$ 322.46	\$ 4,798.01	\$ 3,552.88	\$ 2,827.08
101.105.5870.00 Insurance/Taxes	\$ 7,742.00	\$ 7,566.00	\$ 6,970.00	\$ -	\$ -	\$ -	\$ -
EMS Operations	\$ 30,038.59	\$ 34,114.43	\$ 35,078.67	\$ 36,813.52	\$ 37,975.07	\$ 34,728.08	\$ 28,504.71
TOTAL FIRE (100)	\$ 1,411,588.26	\$ 1,579,378.03	\$ 1,611,558.99	\$ 1,665,085.58	\$ 1,808,846.89	\$ 1,841,569.30	\$ 1,748,103.18
TOTAL POC (103)	\$ 65,713.30	\$ 53,325.79	\$ 57,622.91	\$ 135,016.42	\$ 291,266.77	\$ 335,760.24	\$ 346,426.40
TOTAL EMS (105)	\$ 89,217.97	\$ 78,226.27	\$ 100,132.45	\$ 70,519.01	\$ 37,975.07	\$ 34,728.08	\$ 28,504.71
TOTAL FD BUDGET	\$ 1,566,519.53	\$ 1,710,930.09	\$ 1,769,314.35	\$ 1,870,621.01	\$ 2,138,088.73	\$ 2,212,057.62	\$ 2,123,034.29

Incident Count Trend



Call volume had steadily increased since 2006 but decreased 3.2% in 2010.

The average number of calls per day in 2010 was **5.3**. The busiest day was August 4th with 14 calls for service.

2009 had the highest number of calls, averaging nearly 5.5 calls per day.

Year	Population	# of Incidents	Incident Rate
2000	11,292	1564	13.9
2010	11,404	1950	17.1

2010 Population is based on 2009 census data.
2010 Population includes Arlington Heights.

The population in the City of Reading decreased to 10,561 in 2009 from 11,292 in 2000. However, the population (11,404) protected by the fire department increased slightly due to the Arlington Heights contract.

While the population grew by only 112, the number of incidents per 1,000 people increased from 13.9 to 17.1.



House fire on Gebert St.

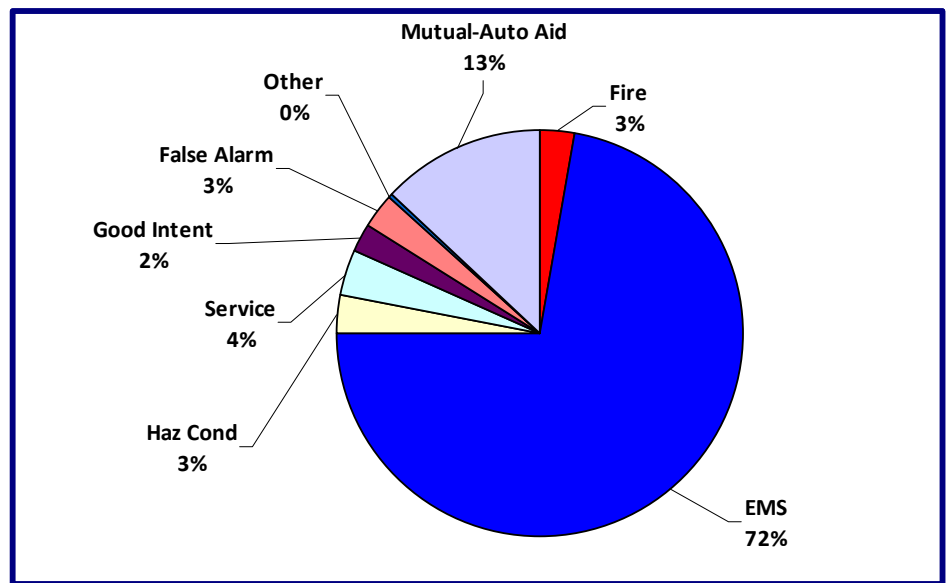
Incident Summary by Major Category Type

Major Category Type	2009		2010	
	#	%	#	%
Fire (building/structure, cooking, trash/rubbish, vegetation, rail/water/passenger vehicle)	43	2.1%	52	2.7%
EMS/Rescue (medical assist, extrication, search, high angle, confined space, trench, water)	1450	71.9%	1408	72.2%
Hazardous Condition (leak, spill, power line, electrical)	57	2.8%	63	3.2%
Service Call (water, smoke, animal problem, public service, assist agency, severe weather)	58	2.9%	71	3.6%
Good Intent (cancelled en route, steam, gas, smoke-odor scare, no incident found)	41	2.0%	44	2.3%
False Call (smoke, heat, CO detector, alarm, sprinkler)	82	4.1%	51	2.6%
Other	6	0.3%	6	0.3%
Mutual-Auto Aid	279	13.8%	255	13.1%
Total	2016	100%	1950	100%

Note – numbers have been rounded to the nearest 1/10th of a percent.

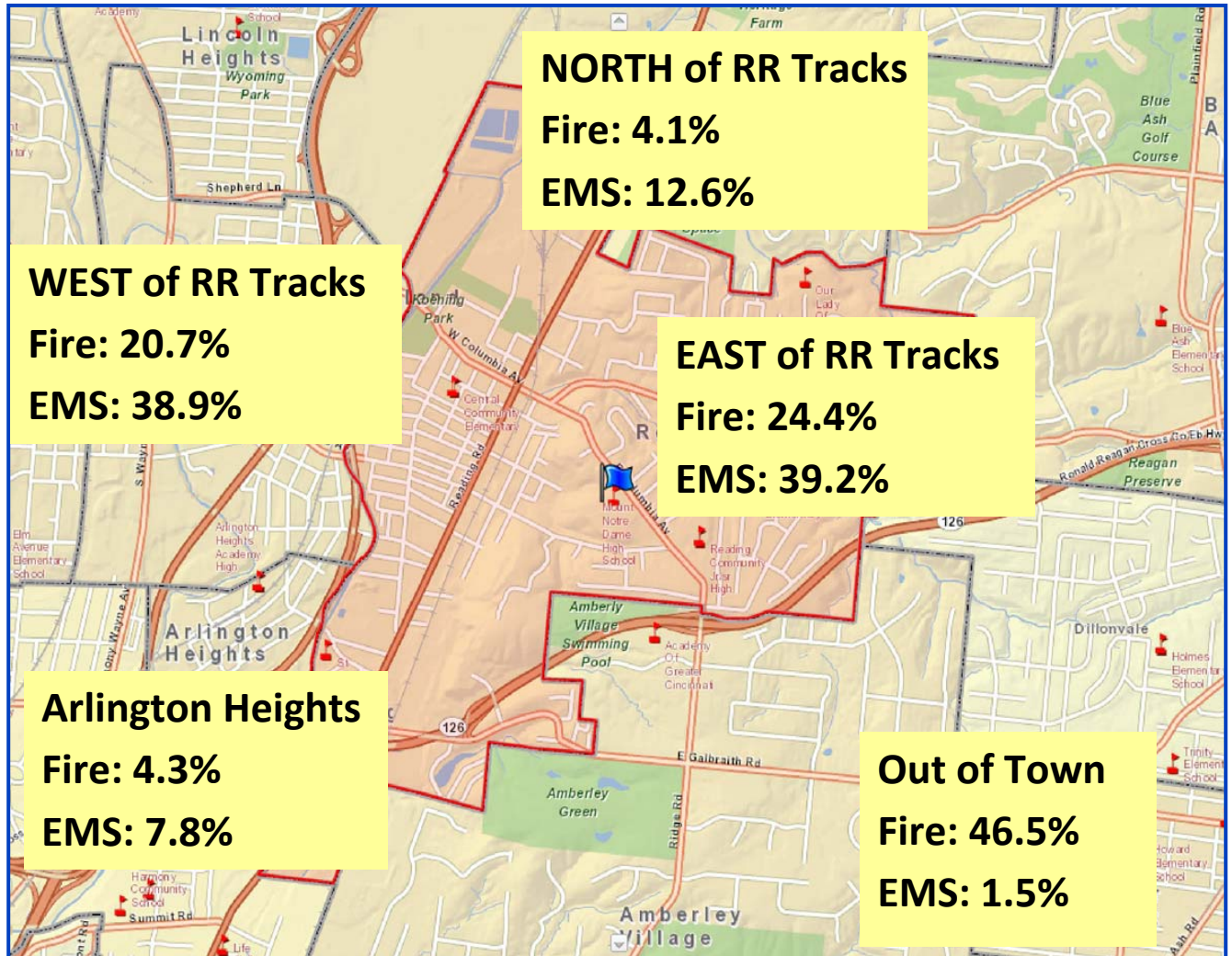
In 2010, the largest number of incidents occurred in the EMS category (72%) followed by mutual-auto aid (13%) and service calls (4%).

Fire incidents accounted for 2.7% of total incidents. This is up from 2.1% in 2009.



From left to right: House fire in Deer Park, house fire in Elmwood Place, Commercial Building Fire in Sharonville.

Incident Response Zone



From Left: Vehicle/garage fire on E. Columbia Ave, truck fire on SB I-75 in Evendale, and house fire on Gebert St.

Fires and Fire Losses by Major Property Use

Property Use	2009			2010		
	# of Fires	Estimated \$ Loss	% of \$ Loss	# of Fires	Estimated \$ Loss	% of \$ Loss
Residential (single/multi, mobile, apartment)	14	158,650	73.6%	24	390,550	88.8%
Non Residential (school, church, business, restaurant, storage)	6	25,000	11.6%	2	1,050	0.3%
Vehicles (auto, truck, bus, construction)	15	31,800	14.8%	7	48,015	10.9%
Outside (brush, grass, rubbish, outside fires with value)	8	0	0%	10	0	0%
Other	0	0	0%	1	0	0%
Total	43	215,450	100%	44	439,615	100%



In 2010, structure fires accounted for 89.1% of total fires compared to 85.2% in 2009.

Of the 26 structure fires in 2010, 92% were residential.

Vehicle fires were 16% of total fires while outside/other fires accounted for 25% of total fires.

In 2010 the estimated dollar loss due to fire was \$439,615 compared to \$215,450 in 2009, representing an increase of 104%.

Residential fires accounted for 88.8% of the total estimated loss.

Photos – Two alarm fire on Jefferson Ave.

Large Loss Fires

Address	Dollar Loss	Shift	Alarms
15 Elizabeth St.	\$142,000	3	2
85 Aljoy Ct.	\$90,000	3	2
131 Gebert St.	\$58,000	1	2
723 Jefferson Ave.	\$25,000	2	1
2625 Mapletree Ct.	\$20,000	2	1
1206 Oldwick Dr.	\$20,000	1	1



Apartment fire on Aljoy Ct.

Structure Fires

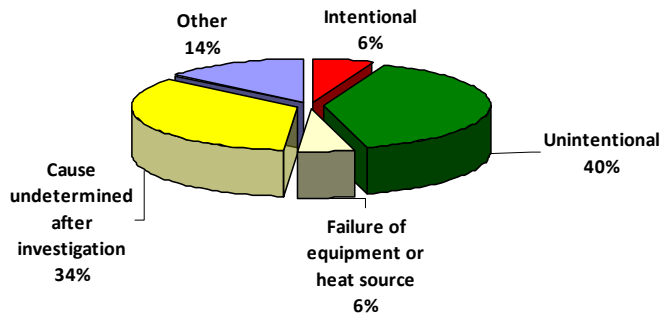
Area of Origin and Cause of Ignition

The highest percent of structure fires originated in functional areas (29%) followed by transportation areas (23%) and structural areas (17%).

For structure fires originating in functional areas, 14% were in a bedroom, followed by 11% in a cooking area, and 3% in a laundry room.

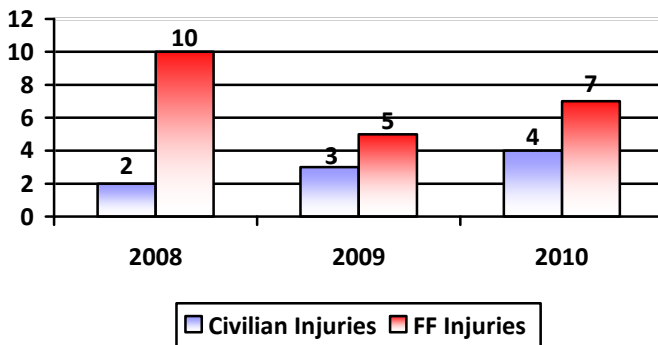
Unintentional fires was the greatest cause of ignition for structure fires at 40%.

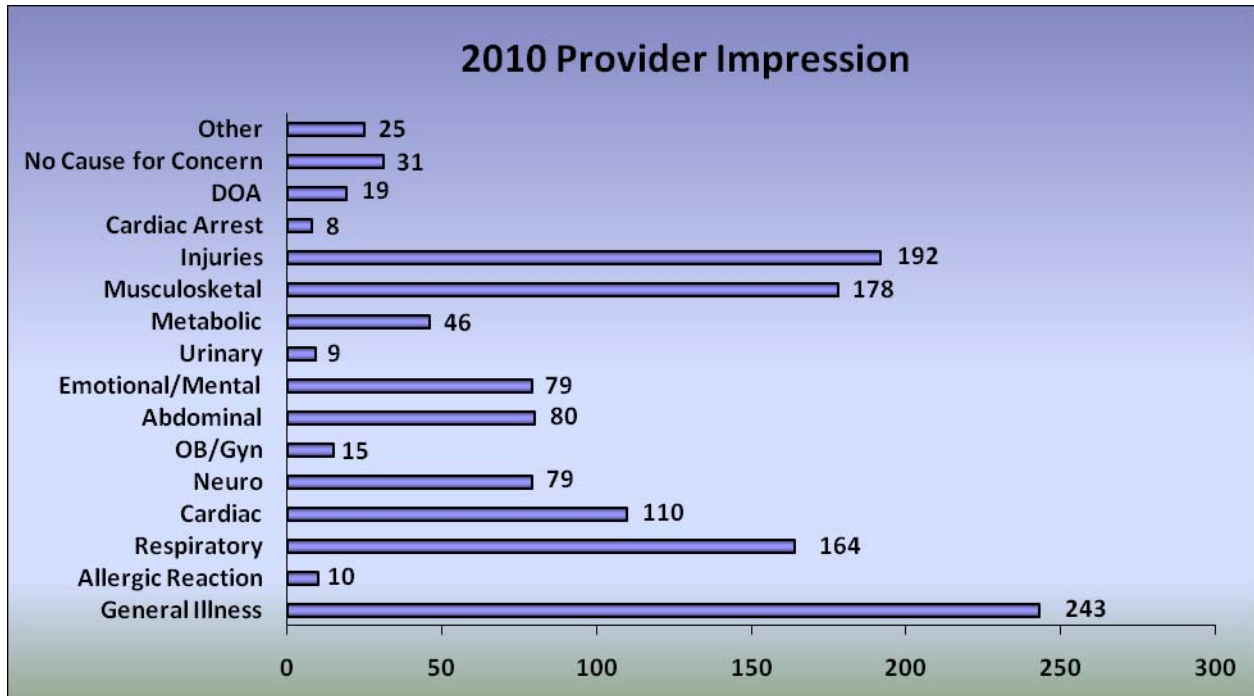
Summary of Fire Causes



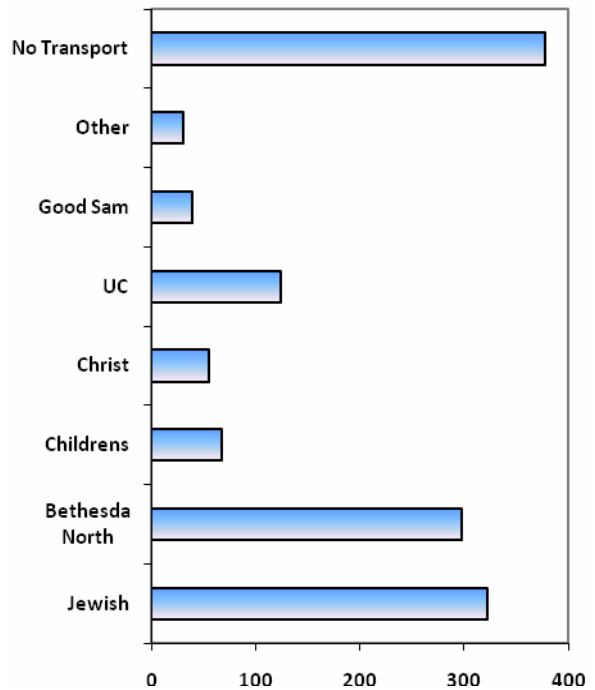
Forcible entry training held at the city garage.

Civilian and Firefighter Injuries



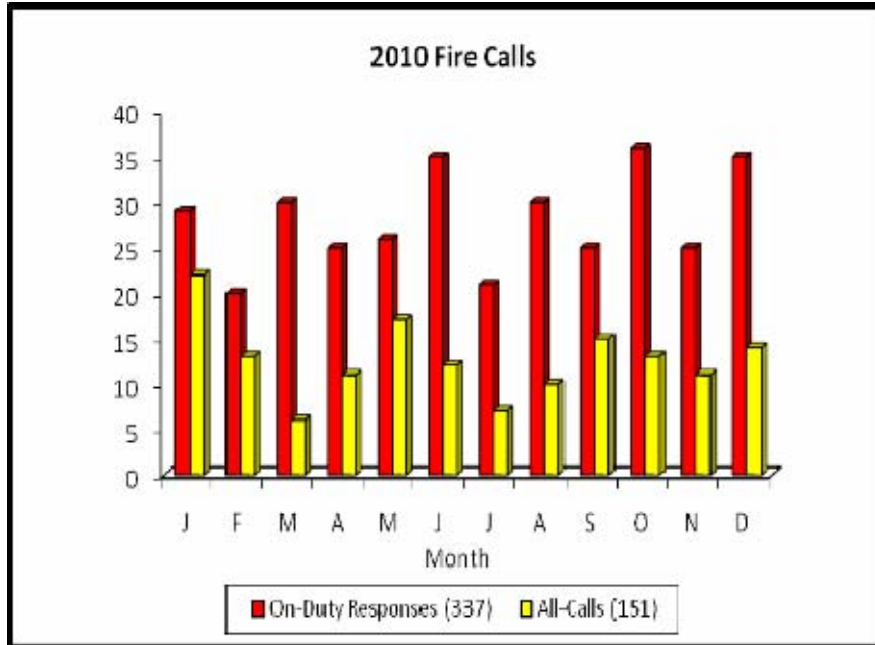


2010 Transport Destinations

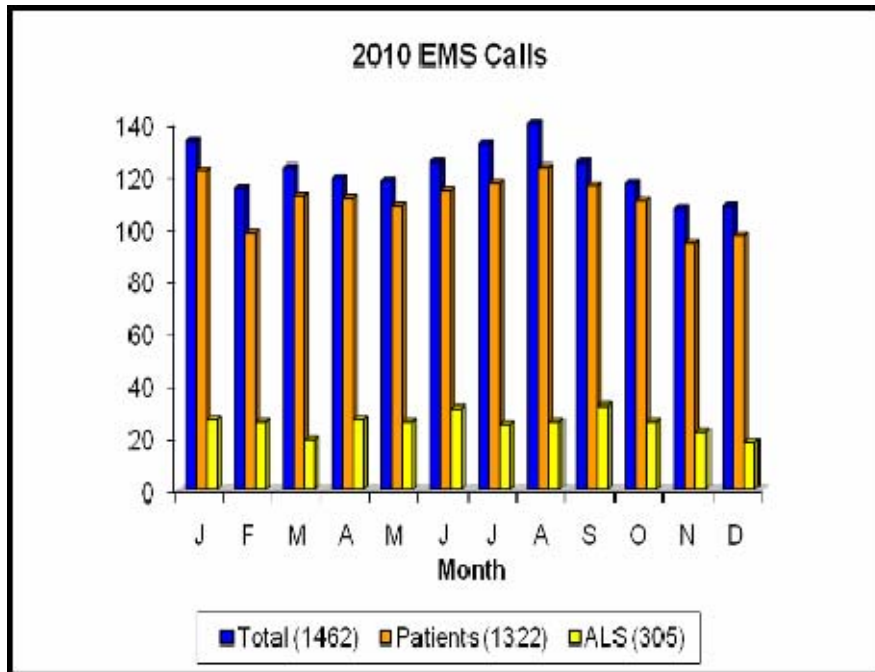


Auto accident with injuries – Reading & Columbia.

Calls by Month

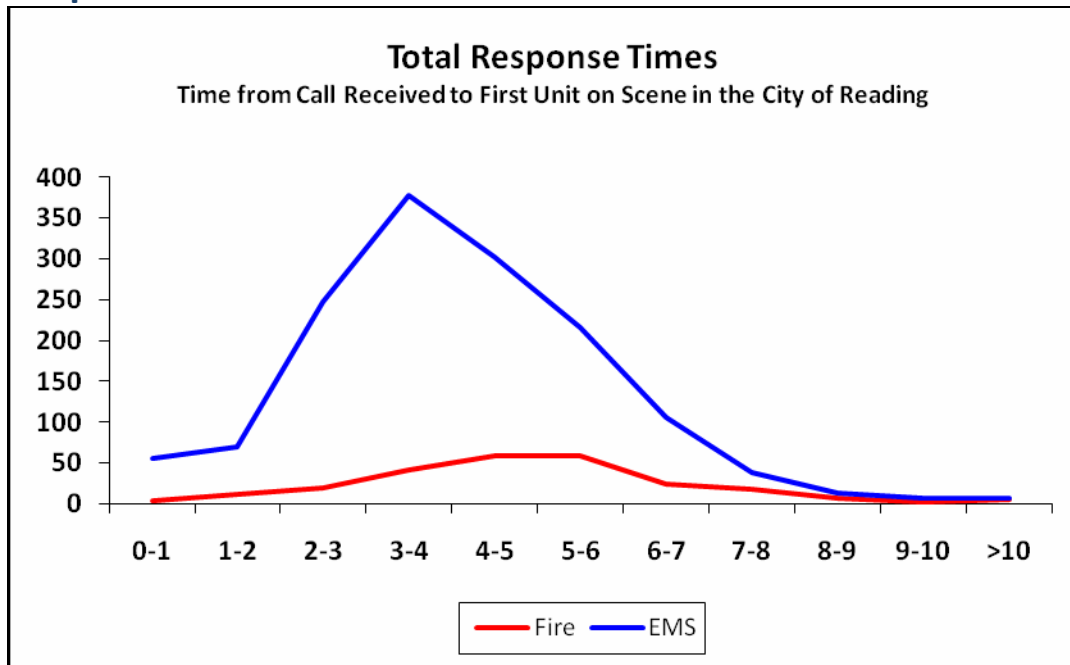


In 2010, the highest number of incidents occurred in January (10.5%) followed by October (10%) and December (10%).



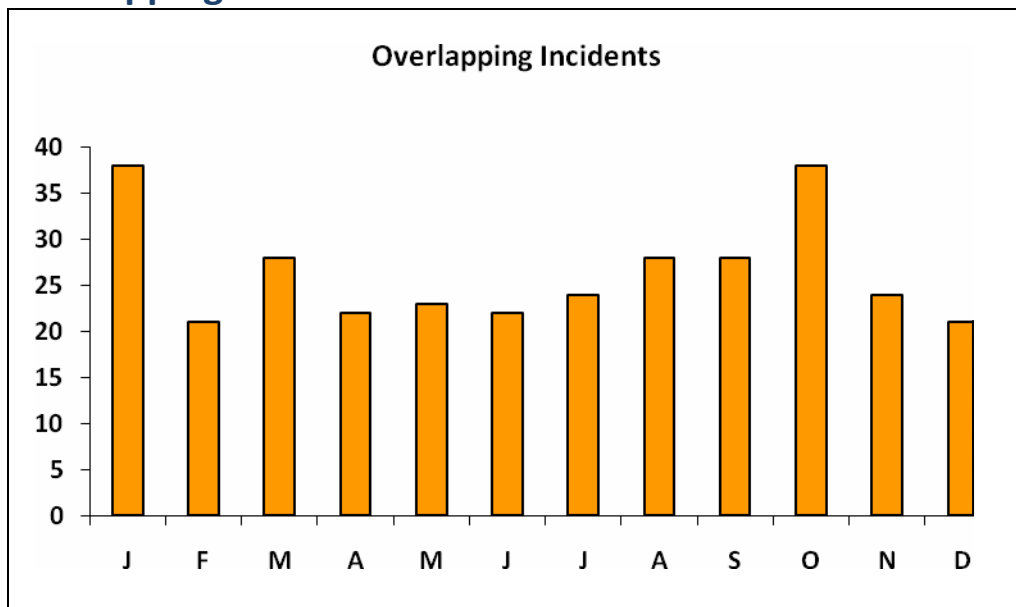
In 2010, the highest number of EMS incidents occurred in August (9.6%) followed by January (9.1%) and July (9%).

Response Times

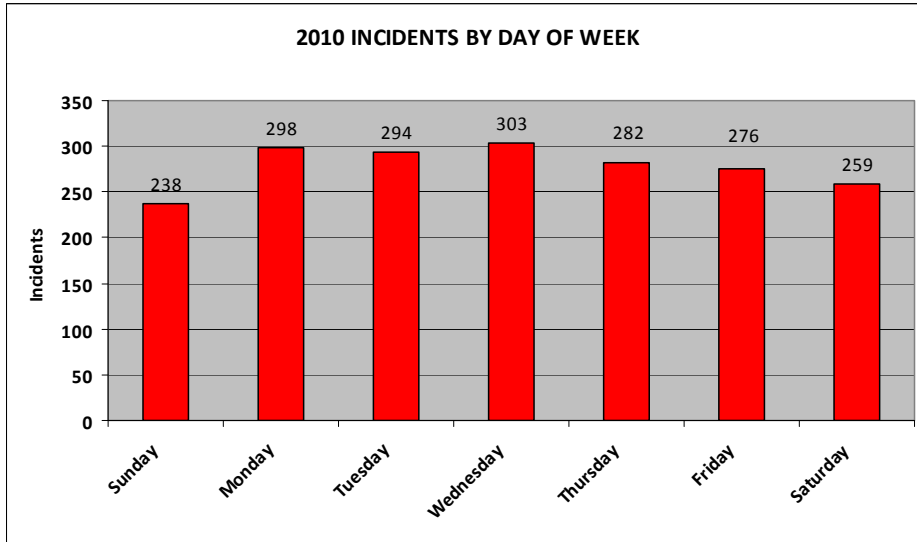


The Reading Fire Department Response Standards specify the minimum criteria needed to effectively and efficiently deliver fire suppression and emergency medical services. The Response Standard is six (6) minutes to all emergency alarms within the city limits. **88%** of the EMS responses, up from 86% in 2009, were made within 6 minutes. **77%** of the fire responses, up from 69% in 2009, were made within 6 minutes.

Overlapping Incidents



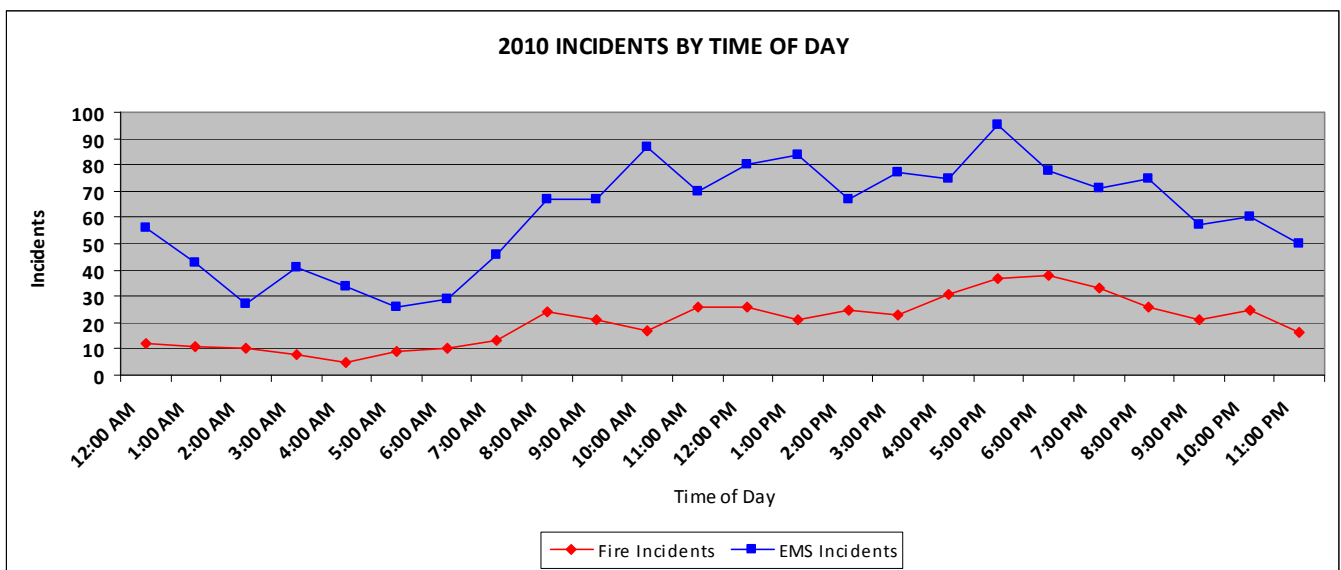
Overlapping incidents are when multiple incidents are occurring at the same time. This happened **16%** of the time during 2010 as compared to 2009 at 15%.



Above: House fire on Elizabeth St.



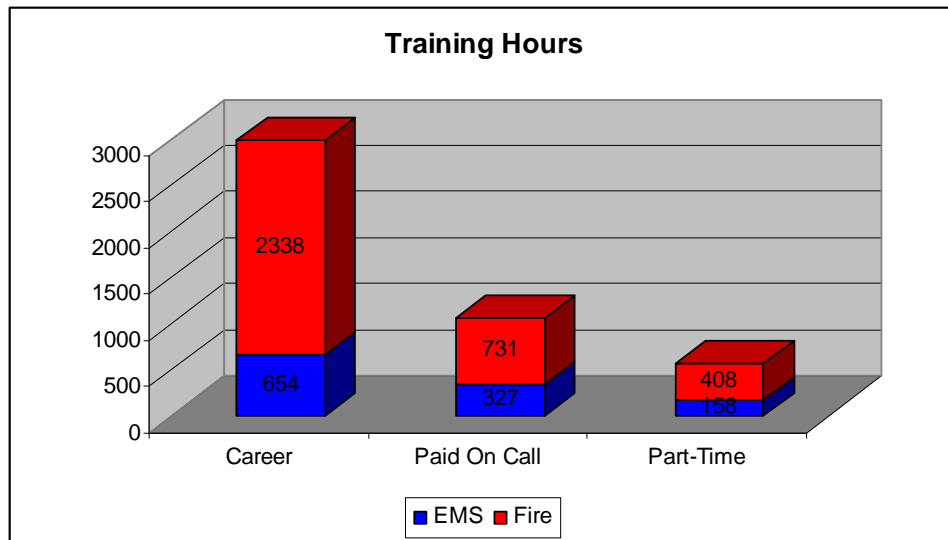
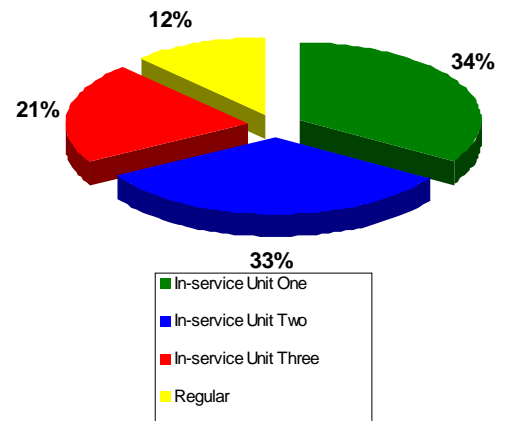
From Left: House fire in Lockland, apartment building fire in Springdale, and house fire in Deer Park/Silverton.



Training by Method of Instruction

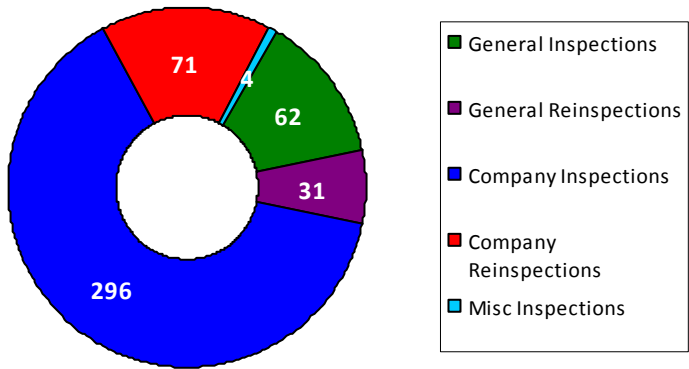


Forcible entry training held at the city garage.

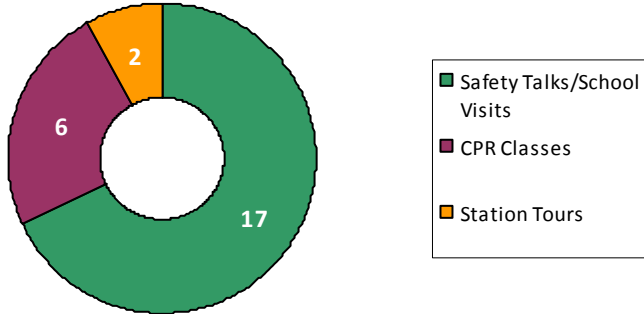


Live Burn training at Colerain in September

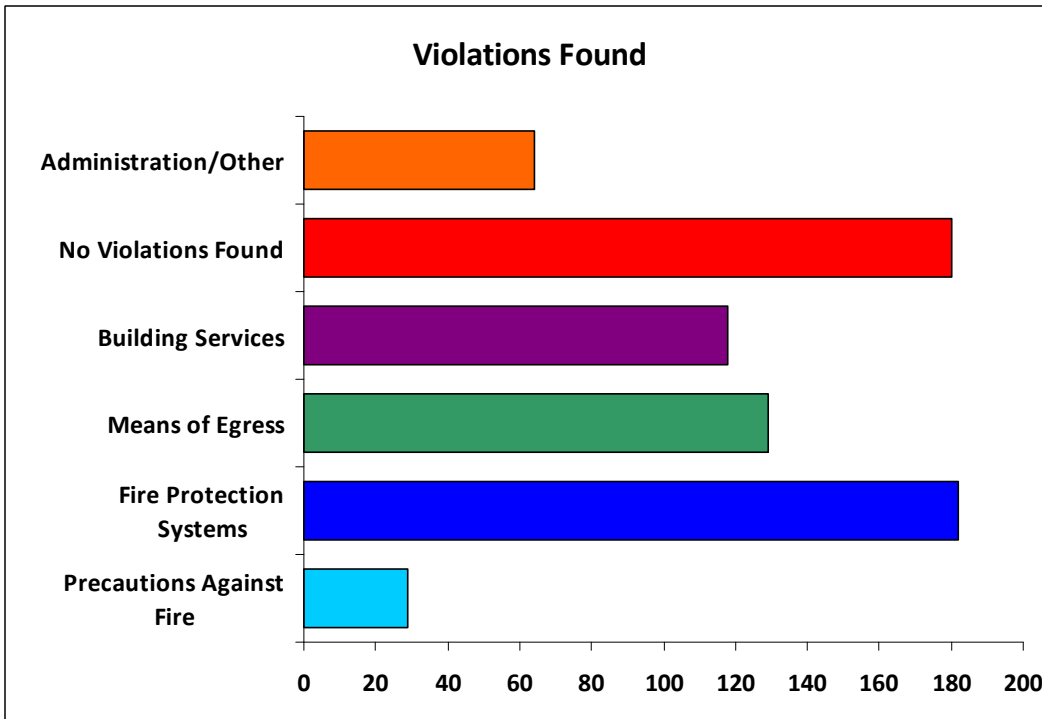
2010 Inspections



2010 Public Education



Violations Found



A total of 522 violations were found during 2010.

Fire extinguishers requiring annual service was the most common violation found (100) followed by extension cords (47).

2010 Accomplishments

- ◆ Installed a new door and electronic keyless lock at the Hilltop Fire Station.
- ◆ Received a \$2,724 Ohio Fire Training Grant.
- ◆ Received vehicle stabilization equipment with a donation from the Reading Eagles.
- ◆ Began a Bourbon fire hydrant replacement program.
- ◆ Purchased new communication equipment for the new voice/tone alerting system that will be completed in the summer of 2011.
- ◆ A five year approval for paramedic operations was received from the Academy of Medicine.
- ◆ Point of Dispensing (POD) exercises conducted in Arlington Heights and Reading.
- ◆ Roof repair and animal barrier system installed on the Hilltop Fire Station roof.
- ◆ Continued painting of hydrants throughout the city.
- ◆ Community Activities
 - Participated in Reading Clean-Up Day
 - Raised money for TriState Leukemia/Lymphoma Society during Breast Cancer Awareness month
 - Raised money for Juvenile Diabetes in conjunction with Kroger's and Tony Pike.
 - Ahrens Fox was in the First Annual Reading Car Show.
- ◆ A new squad was ordered from Horton; expected delivery is in February 2011.



2010 Awards/Honors

Lt. Paul M. Gallo
Fire Officer of the Year

FF/P Michael J. Hardewig
Career Firefighter of the Year

FF/P Ron Sauder
*Part-Time/Paid On-Call
Firefighter of the Year*

ADMINISTRATIVE STAFF

Kevin D. Kaiser, Fire Chief
Kim E. Fladung, Assistant Fire Chief

CAREER AND PART-TIME STAFF

SHIFT 1

Lt. Paul M. Gallo
FF/P Terry Widmann
FF/P Ed VonLehmden
FF/P Paul Naehring

FF/P Tyler Strole
FF/P Sean Healy

SHIFT 2

Lt. Thomas J. Grau
FF/P Todd Burwinkel
FF/P Kit Kretschmar
FF/P Ryan Androne

FF/P Bruce Thompson
FF/E Tom Landrith

SHIFT 3

Lt. Todd A. Owens
FF/P Dan Kunkel
FF/P Mike Hardewig
FF/P Eric Fischesser

FF/P Tim Jung
FF/E Eric Halpin

PAID ON-CALL STAFF

FF/E Fred Boswell
FF/E Andy Burton
FF/E Phil Connell
FF/E Gary Cook
FF/P Nathan Daley
FF/E Kevin Daniels
FF/E David Davis
FF/E Tom Flynn
FF/P Jim Gallo
FF/E Mike Herbert
FF/E Jerry Kirby
FF/E Christina Mitchell
FF/E Rick Mitchell
EMT Dean Ramsey
FF/P Ron Sauder
FF/E Rob Singer
FF/E Dan Wattenhofer
FF/E Michael Welling
FF/E Russ Wernke

RETIREMENTS

Paid On-Call member Dan Staab retired after 30 years of service.

RESIGNATIONS

Paid On-Call members Steve Crase, Sean Mesley, and Shonda Thompson resigned in 2010.